

**MIKE PARRISH**



**INVITATIONAL**

**2025**

## An aerial photograph of a city, likely Denver, with mountains in the background. The text "Welcome Baseball Families!" is overlaid in a large, stylized font. The word "Welcome" is in a white script font, and "Baseball Families!" is in a bold, white sans-serif font with a yellow outline. The text is positioned in the upper left quadrant of the image. The background shows a mix of urban buildings, green trees, and a blue sky with light clouds. A blue wavy graphic element is at the bottom of the image.



# ***PALOUSE***

## ***SUMMER SERIES***

***JUNE 13-15, 2025 - 10U***

### **WILLSON/JOHNSON - POOL**

Central Washington Sixers  
Palouse Cougars  
HCS Cutthroats

### **MCLINTOCK/KIRKPATRICK - POOL**

509 Gunslingers  
Moscow Pilgrims  
Kennewick American

### **FRIDAY, JUNE 13**

#### **MAC PARK FIELD #2**

#### **ROTARY FIELD**

<b>4pm</b>	Palouse Cougars vs HCS Cutthroats	<b>3pm</b>	509 Gunslingers vs Moscow Pilgrims
<b>6:30pm</b>	CW Sixers vs Palouse Cougars	<b>5:30pm</b>	Moscow Pilgrims vs Kennewick American

### **SATURDAY, JUNE 14**

#### **MAC PARK FIELD #2**

#### **ROTARY FIELD**

<b>10am</b>	Kennewick American vs 509 Gunslingers	<b>10am</b>	HCS Cutthroats vs CW Sixers
<b>12:30pm</b>	W/J #1 vs M/K #3	<b>12:30pm</b>	M/K #1 vs W/J #3
<b>3pm</b>	W/J #2 vs M/K #2		

### **SUNDAY, JUNE 15**

#### **MAC PARK FIELD #2**

#### **ROTARY FIELD**

<b>10am</b>	W/J #1 vs M/K #2	<b>10am</b>	M/K #1 vs W/J #2
<b>1pm</b>	<b>Championship Game</b>	<b>12:30pm</b>	M/K #3 vs W/J #3

***AT  
COLFAX  
MCDONALD PARK AND ROTARY FIELD***





# *4<sup>th</sup>* of July *in Pullman*



JULY 4 | 5 P.M.

SUNNYSIDE PARK, PULLMAN, WA



Brought to you by:



# ***PALOUSE***

## ***SUMMER SERIES***

***JUNE 13-15, 2025***

### **PARRISH - POOL**

Central Washington Sixers  
Palouse Cougars  
Orofino Maniacs  
HCS Cutthroats

### **MOORE - POOL**

509 Gunslingers  
Kendrick Tigers  
LC Valley Rattlers  
Kennewick American

### **FRIDAY, JUNE 13**

#### **MAC PARK FIELD #3**

#### **MAC PARK FIELD #4**

**12:30pm** HCS Cutthroats vs  
Central Washington Sixers  
**3pm** LC Valley Rattlers  
509 Gunslingers  
**5:30pm** Kennewick American vs  
Kendrick Tigers

**3pm** Orofino Maniacs vs  
Palouse Cougars  
**5:30pm** Palouse Cougars vs  
HCS Cutthroats

### **SATURDAY, JUNE 14**

#### **MAC PARK FIELD #3**

#### **MAC PARK FIELD #4**

**10am** Palouse Cougars vs  
Central Washington Sixers  
**12:30pm** Central Washington Sixers vs  
Orofino Maniacs  
**3pm** Orofino Maniacs vs  
HCS Cutthroats  
**5:30pm** LC Valley Rattlers vs  
Kendrick Tigers

**11am** Kendrick Tigers vs  
509 Outlaws  
**1:45pm** Kennewick American vs  
LC Valley Rattlers  
**4:30pm** 509 Gunslingers vs  
Kennewick American

### **SUNDAY, JUNE 15**

#### **MAC PARK FIELD #3**

#### **MAC PARK FIELD #4**

**10am** Parrish #1 vs  
Moore #2  
**12:30pm** Parrish #2 vs  
Moore #1  
**3pm** Championship Game

**11am** Parrish #3 vs  
Moore #3  
**1:30pm** Parrish #4 vs  
Moore #4

***AT***  
***COLFAX***  
***MCDONALD PARK***





# All Day Sports Tournaments

PULLMAN, WASHINGTON

8.16.2025

- Pickleball/Tennis
- Softball
- Tase T. Lentil 5k
- 3 on 3 Basketball

## Registration Open



PRESENTED BY



WASHINGTON STATE UNIVERSITY  
PULLMAN

SCAN HERE



LEARN MORE AT: [WWW.LENTILFEST.COM](http://WWW.LENTILFEST.COM)



## ***Tournament Rules & Regulations*** **9U, 10U, 11U and 12U Division**

**The tournament will be governed by Cal Ripken League tournament rules.**

**Age divisions will be determined by child's age on May 1<sup>st</sup>, 2025.**

**Players must be born on or after May 1<sup>st</sup>, 2012 for 12U, 2013 for 11U, 2014 for 10U, and 2015 for 9U**

### **EQUIPMENT NOTES:**

1. No metal cleats allowed in any division
2. All bats must have a USABat or BPF 1.15 (USSSA) sticker to be eligible for tournament play

### **GENERAL PRE-GAME & GAME PROCEDURES**

1. Home team, in pool play, will be the first team listed on the bracket. During bracket play, the home team will be determined by the higher ranked seed. Tie breakers below will be used to determine the home teams.
2. In an effort to speed things along we ask that you be ready to play at least 5-10 minutes before your scheduled start time. If managers and umpires agree, game may start early.
3. No infield will be taken before games.
4. Scorekeeping: Home team will be responsible for keeping official scorebook during game.
5. Protests will not be allowed on judgment calls. The umpire will settle all problems on the field at the time of dispute. Umpire may confer with Tournament Director and Umpire-in-Chief for help at time of dispute. No protest will be allowed after next pitch is thrown or following the game.

### **RULES OF PLAY**

1. 12U & 11U will be played on 70'. Lead off, stealing, and dropped 3rd strike is allowed.
2. 9U & 10U will be played on 60'. Stealing allowed only when the ball crosses the plate.
3. Dropped 3rd strike will not be played at 9U & 10U
4. Absolutely no head first sliding advancing to a base. Penalty is runner will be out. Diving back head first to a base is allowed.
5. We will enforce an "avoid contact" or "must slide" rule at all bases when a potential play is being made. Malicious contact-runner will be ejected. It is the discretion of the umpire if the runner is trying to avoid contact or a collision.
6. Batting Order: You may bat your entire lineup. If you do, you have unlimited substitutions. You may also decide to play with 9 batters or 10 batters (EH) if you choose to do so. Batting order must remain the same for duration of the game. If





Open 7 Days A Week  
Open 11am - 2am Daily  
**All Ages Welcome Until 8pm**  
Grill Closes At 8pm  
Outdoor Seating

"A Tradition Since 1932"

@thecoug

Sunday - Trivia @ 6pm  
Tuesday - Hamburger Special  
Wednesday - Mug Night  
Awesome Hourly Daily  
Open Every CFS





batting the entire roster and a player is injured, the player can be removed from the lineup without penalty. If batting the entire roster and a player is ejected, each time that players' spot in the lineup comes up, it will be counted as an out.

7. Batting Order Re-entry Rule: Starters may only re-enter one time and in the same spot in the batting order after sub has met mandatory play of 3 consecutive outs and 1 at bat.
8. No slug bunting is allowed. Any player who does will be ejected from the game.
9. Courtesy runner is in place for the catcher. With zero, one or two outs a catcher *may* use a courtesy runner in order to speed up the game. The last preceding batter/runner out may run for him (when batting entire roster) or a player on the bench (when batting 9 or 10 batters). Each team can use a courtesy runner for the pitcher as well and will follow the same guidelines.
10. On-deck hitters must remain on their own dugout side of field in designated on-deck area.

### **PITCHING RULES & REGULATIONS**

1. "Rolling 6": Pitchers are allowed 6 innings in any 2 consecutive games. *Ex.: If a pitcher went 2 innings in the previous game, the pitcher is available for 4 innings in current game.*
2. Max of 6 innings pitched per day. Max of 9 innings pitched per tournament.
3. A pitcher removed from the mound may not re-enter as a pitcher in the same game
4. The scorekeeper will keep track of pitched innings and each coach is responsible for ensuring that the book is accurate. Innings for pitchers will be tracked on the scoring chart/bracket and will be posted for all coaches to view.
5. 1 pitch thrown in an inning = 1 inning pitched.
6. Please have a player/coach available to warm up your pitcher between innings when your catcher is not ready. A player should have protective facemask on at all times.

### **TIME LIMITS & RUN RULES**

1. Game length will be 6 innings OR no new inning at 1 hour and 45 minutes. Umpire will start game time when first pitch is ready to be thrown.
2. There is no time limit for bracket play games (Sunday).
3. Tie Games: Pool Play – games will end in tie if score is equal after 6 innings, or after 1 hour 45-minute time limit has been reached. Bracket Play - We will use a tie-breaker rule. Each team will start the inning with the player who was last recorded out, as a base runner on 2nd base. You may not pinch run for this runner! The only exception to this tie-breaker rule will be the Championship game which will simply go to regular extra innings.
4. Mercy Rule – 15 runs after 3 innings, 10 runs after 4 innings, and 8 runs after 5 innings.
5. 4 innings constitutes a complete game when delayed or called because of inclement weather.

# THE LAND

**Open All Summer - 7 Days A Week**

**All Ages Welcome Until 9pm Daily** | Outdoor Patio - Air Conditioning

Food, Drinks, Billiards, Darts, & More

Dine-in or Carryout Options



**3 Minutes** North of  
Bailey-Brayton Field.  
Order From The Field & Pick up  
Post Game!

Call Ahead For Groups  
(509) 715-1003

## **GENERAL EXPECTATIONS**

1. All players must wear uniform on outside of their undershirts or sweatshirts so official scorekeeper can easily identify player.
2. Only three (3) authorized coach are allowed outside of the dugout while on defense. Only three (3) authorized coaches are allowed outside of the dugout while on offense. Two (2) base coaches and one (1) coach in the dugout area. Everyone else shall remain safely inside the dugout and out of the field of play.
3. Eliminate defensive huddles prior to your team taking the field between innings.
4. At the end of the game, remove garbage from dugout and clear dugout in a timely manner. Hold post-game discussions outside the dugout and preferably off of the playing field.
5. Show respect to the umpires, the fans, your players, your opponents and most of all to this great game.
6. Manager or player ejections will result in a minimum one game suspension in addition to the game they are ejected from. Additional games may be added at the discretion of the umpire and/or Tournament Director.
7. Any participant, fan, parent, manager, etc. may be ejected from the facility for unruly behavior. If this occurs, that person(s) will have 5 minutes to exit the premises or the associated team will forfeit the tournament.

## **TIE BREAKER RULES FOR ADVANCEMENT AND SEEDINGS (Bracket Play)**

1. Best record in pool play (Win/Loss)
2. Head-to-Head, if applicable
3. Runs Allowed
4. Runs Scored





## PULLMAN'S FAVORITE POST-GAME TRADITION.



24 rotating taps



Family-friendly with toy  
boxes + coloring menus



Scratch-made meals



Cougar Gold Mac &  
Cheese, Pullman Pretzels,  
Prime Rib Dip



Large group seating

**SOUTH FORK  
PUBLIC HOUSE**

*Sun - Thu 11:00AM - 9:00PM*

*Fri - Sat 11:00AM - 9:30PM*

1680 S Grand Ave Pullman, WA 99163

(509) 332-3675

# ***PALOUSE***

## ***SUMMER SERIES***

### ***TOURNAMENT EXTRAS***

- **Weather or other extenuating circumstances, such as smoke, that occur during tournament play that limit the number of games played will determine the following refund:**
  - **1 game played = 50% refund**
  - **2 games or more played = no refund**
- **Cages can be utilized at Colfax's McDonald Park, but not at WSU. Each team will have access to a cage on their respective sides. If our local youth teams are using the softball cages, the main cage schedule will go as follows; home team 1:15 mins prior to the games start time and the away team :45 mins prior to the games start time. The same cage schedule will be used for any games played at Pullman High Schools, Quann Field. LCSC may have available indoor cages out passed the right field wall and the schedule for that is TBD.**
- **We will follow all health guidelines in place by the state of Washington, Whitman County and Washington State University as well as the state of Idaho, Nez Perce County and Lewis and Clark State College.**
- **NO METAL SPIKES ALLOWED AT WSU on Bailey-Brayton or Valley Road. This goes for any part of the facility. Metal spikes can be worn at LCSC, Moscow, and Colfax, but not WSU.**
- **Each team will provided a box of baseballs upon arriving at the tournament. Any additional new baseballs will be provided by the team if you run out of the courtesy box of balls from the PSS.**
- **There are no gate fees for the 2025 Palouse Summer Series. All guidelines for fans attending the game will be determined by each fields governing body and will strictly follow our states guidelines at the minimum.**
- **Alcohol and tobacco products are not allowed at any of the PSS sites and Dogs are not allowed at WSU's Bailey-Brayton Field or Valley Road Playfield.**
- **Upon arrival each tournament may have game awards, prizes, homerun coupons, etc. The gates and site supervisors will handle distribution of those prizes, but make sure coaches and parents are also communicating as a reminder. We want to make sure those coupons are handed out.**
- **New addition for the weekends we play at LCSC. Harris Field does not allow seeds, just the same as WSU. Please make sure no fans or players are chewing and/or spitting sunflower seeds anywhere inside the LCSC and WSU (Bailey Brayton or Valley Road) facilities.**



# Welcome to the Palouse!



## SWEET MUTINY

*Froyo & Treats*

# OVER 40 TOPPINGS!

- **Flavors change weekly**
- **Open until 10pm in summer**

509-332-CUPS · 1195 S.E. Bishop Blvd. · Pullman

  Follow us on social media



# **PALOUSE**

## **SUMMER SERIES**

### **INCLEMENT WEATHER OUTLINE**

- **The tournament director will make the ultimate decision to delay, reschedule, or cancel any tournament games, but not without consultation from any or all of the following: coaches from both teams, umpires, and site management personnel. Please keep in mind that it is in the best interest of all involved that the maximum number of tournament games is completed.**
- **In the event of inclement weather on any one of the tournament days, the schedule may be altered so that maximum games are played for each team as evenly as possible, with respect to the entire tournament field.**
- **In the event that inclement weather does cancel games before championship Sunday, the team(s) with the best record out of the round robin division play will be placed in the championship bracket. In the event that more than one team has the same record in round robin division play, the team(s) with the largest run differential will be placed in the championship bracket.**
- **The goal of the tournament is to ensure that the maximum number of tournament games are completed evenly by all teams and a champion is crowned on championship Sunday. The tournament director's decisions will reflect this premise.**



**STOP BY AND GET YOUR CAR  
CLEAN AND SHINY!**

**PULLMAN  
440 Brelsford Dr,**

**MOSCOW  
150 Southview Ave**

**GO WITH THE BEST, RPM EXPRESS**





# APEX ROOFING

## Apex Roofing: Premium Quality Roofing, Every Time

Treating Every Home As If It Were Our Own

- We Stand Behind Our Work
- Storm Damage Restoration Experts
- Custom Solutions for Every Customer

[BOOK A FREE ESTIMATE](#)



317 W 6th St #107, Moscow, ID 83843  
(509) 316-2669



# PALOUSE

## SUMMER SERIES

Pullman | Moscow | Colfax | Lewiston

**WE WANT YOUR FEEDBACK!**



Whether you're a player, fan, coach, or local, we greatly appreciate your feedback.

Tell us what you think of this event by filling out the survey at

**[www.palousesummerseries.com](http://www.palousesummerseries.com)**

# TICK KLOCK DRUG

📞 (509) 397-2111



Offering pharmacy and gift shop services, clothing, and accessories to the following areas:

- 📍 Colfax, WA
- 📍 Pullman, WA
- 📍 Clarkston, WA
- 📍 LaCrosse, WA

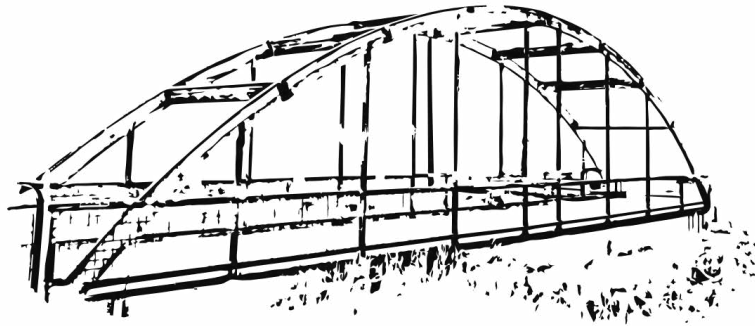
- 📍 Endicott, WA
- 📍 Oakesdale, WA
- 📍 Garfield, WA
- 📍 Steptoe, WA

- 📍 Rosalia, WA
- 📍 Palouse, WA
- 📍 Moscow, ID
- 📍 Lewiston, ID

Monday: 9:00 AM - 5:30 PM  
Tuesday: 9:00 AM - 5:30 PM  
Wednesday: 9:00 AM - 5:30 PM

109 S Main St  
Colfax, WA 99111

Thursday: 9:00 AM - 5:30 PM  
Friday: 9:00 AM - 5:30 PM  
Saturday: 9:00 AM - 4:00 PM  
Sunday: Closed



# WOODBIDGE

## Real Estate

**605 S. Grand Ave, Suite 1**

**Pullman, WA 99163**

**Pullman/Moscow/Colfax/**

**Lewiston/Coeur d'Alene**

**& beyond!**



# JACOB T. DAVIS

**BROKER/OWNER**

**509-553-9068**

**[jacobtdavis@woodbridgereal.com](mailto:jacobtdavis@woodbridgereal.com)**

**[woodbridgereal.com](http://woodbridgereal.com)**





# MOSCOW

chamber of commerce  
+ visitor center



Explore  
THE  
Possibilities

## VISIT DOWNTOWN MOSCOW

Our vibrant downtown offers an exciting,  
eclectic retail experience + world class dining

411 S. Main St-moscowchamber.com-(208)882-1800



### FLYING SQUIRREL

THE WORLD'S LARGEST INDOOR TRAMPOLINE FUN PARKS



FREE STYLE TRAMPOLINE  
COURT



BIRTHDAY PARTIES

60, 90, 120 MINUTE JUMP TIME, NEON  
LIGHTS, AND 60, 90, 120 MINUTE  
TODDLER TIMES

**20% OFF**

DISCOUNT CODE:  
**Summer25**



TRAPEZE & FORM PIT



BATTLE BEAM



NINJA COURSE



## FLYINGSQUIRRELSports.COM

231 Warbonnet Dr, Moscow, ID 83843

Disclaimer: Sale is valid until August 31, 2025. Eligible Offer Items: The sale applies to the following items: 60, 90, 120 Jump Times, Neon Times, and 60, 90, 120 Toddler Jump Times. Online Purchase Requirement: To avail of this offer, all purchases must be made exclusively online through our official website. Restrictions: Please note that this offer cannot be combined with any other coupons, discounts, or promotions. Not valid on Gift Cards or Birthday Party Packages. Only one offer can be applied to each transaction. By participating in this sale, you acknowledge and accept these terms and conditions. We reserve the right to modify or terminate this offer at any time without prior notice. For any inquiries or concerns, please contact our customer support team. Jump passes expire 365 after purchase date. Must Present Coupon to redeem.



# CRIMSON

Bar + Bites

OPEN DAILY  
4PM

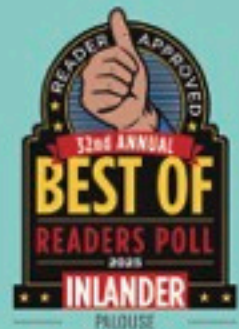
EVERYONE WELCOME!

509.334.4437  
1190 SE BISHOP BLVD  
PULLMAN, WA



# KNEAD

Café & Pâtisserie



BEST COFFEE SHOP



parent  
Fueling <sup>^</sup> champions all  
Summer long!





American Fare  
with Southern Flair

Craft Beer  
Crafted Cocktails  
Much Whiskey



Group & Family Friendly

Friendly to parents  
who need a break! 😊



Monday to Saturday  
Lunch 11:30am to 3pm

Dinner 3pm to 8pm  
(8pm Last Seating)

Happy Hour  
3pm to 5pm (Restaurant)  
3pm to 6pm (Bar & Patio)



1360 SE Bishop Blvd.  
Pullman, WA 99163

(509) 332.0108  
Call for Reservations



# CHIPMAN & TAYLOR

**EXPERIENCE THE DIFFERENCE**

SE 250 BISHOP BLVD PULLMAN WA 99163-4914



Chipman & Taylor Chevrolet in PULLMAN, WA, serves all Eastern Washington shoppers including those from Spokane and the Tri-Cities. We have the highest rated customer service in the area, so before you settle on other auto dealers around Spokane view our new or used inventory to make sure you're getting the vehicle you truly want and also at the best price available. Be sure to check the special offers at our Chevrolet dealership before you drive in! Contact us at (509) 592-4152 if you have any questions about any of the new and used vehicles we have. Our experienced and well-trained staff is here to answer all your questions.





**WHERE THE PALOUSE COMES TO PLAY AND EAT**

**780 SE Bishop Blvd, Pullman, WA 99163**



**PULLMAN'S HOME FOR FOOD, FAMILY, & FUN.**

**FOOD HALL**

**MON 4PM-9PM**

**TUE, FRI, SAT 11AM-9PM**

**NIGHTLIFE & FOOD**

**18+**

**TUE, FRI, SAT 9PM-2AM**

**305 N GRAND AVE, PULLMAN WA**



# PORCH LIGHT PIZZA

is a proud sponsor of Palouse Summer Series

Porch Light Pizza is the newest pizza restaurant in Pullman and offers a variety of fast, fired, artisan pizza

Check out a menu at the front gate  
or call 509-334-7437

The fire is lit and the lights is on!  
Located at 200 NE Kamiak, Pullman WA



VISIT OUR DOWNTOWN RESTAURANT  
OR TRAILSIDE TAPROOM!

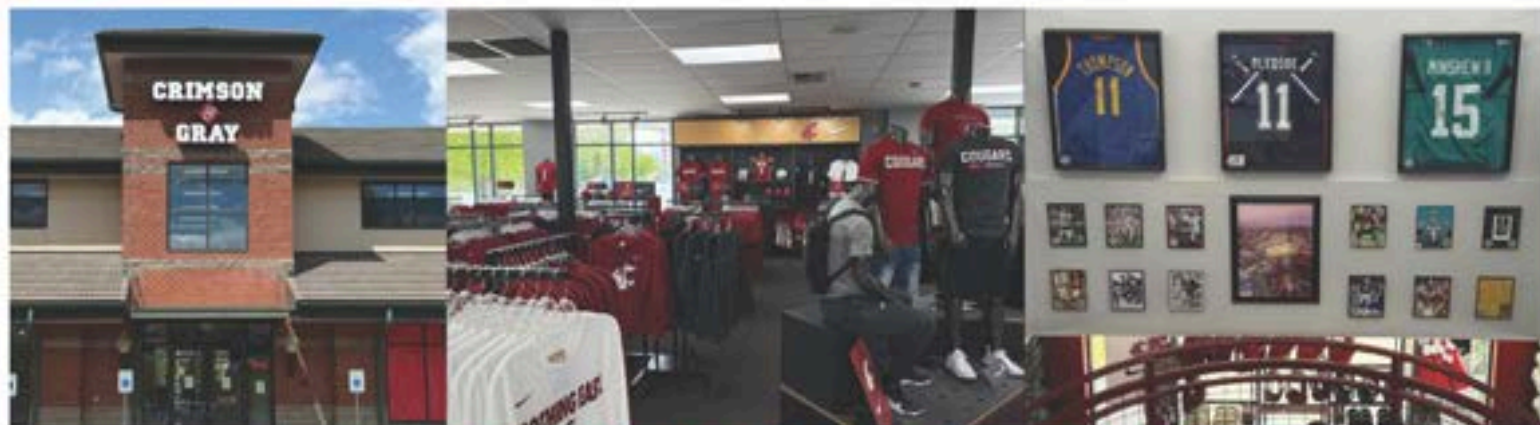
RESTAURANT:  
509-338-9463  
245 SE Paradise St.  
Pullman, WA 99163

TAPROOM:  
509-339-6894  
505 SE Riverview St.  
Pullman, WA 99163



# CRIMSON & GRAY

COUG GEAR, GIFTS AND APPAREL



**[www.CRIMSONGRAY.com](http://www.CRIMSONGRAY.com)**

**1096 SE BISHOP, PULLMAN - 509-332-1440**

*College Hill*

Branded Merchandise Experts

We're not your average merchandise studio -

**WE'RE A BRANDED  
MERCHANDISE  
POWERHOUSE!**

Our team is passionate about creating custom apparel and products for businesses and organizations across the nation.

**Let's collaborate to create something  
amazing today!**



**COLLEGEHILL.COM (888) 885-1993**





Contact Jon Parrish for your insurance needs!

[jonp@pacinsurancegroup.com](mailto:jonp@pacinsurancegroup.com)

509-432-3841

Experience the charm  
of  
Downtown Colfax



Stroll past gorgeous old buildings,  
enjoy flowers blooming on every  
corner, fun for the whole family.

**We'll see you downtown!**

**SUBWAY**

**IN STORE TOURNAMENT SPECIAL!**

For every 10 athletes served,  
receive a free meal for  
yourself or a team driver!

460 E Main St, 811 N Main St,  
Pullman WA Colfax WA

(509) 332-5906

The advertisement for Palouse Ridge Golf Club features a scenic background of a golf course at sunset. In the foreground, a golf ball with a red "P" logo sits on a tee. The text "play palouse ridge" is written in a large, white, sans-serif font. Below it, the price "\$70" is displayed in a large, bold, red font. To the right of the price, it says "18 holes w/cart". At the bottom, the phone number "(509) 335-4342" and the website "PALOUSERIDGE.COM" are listed. A small disclaimer at the very bottom reads: "Not valid for group outing play. Present this Summer Series ad to redeem promo. Expires 8-1-25".

play  
palouse  
ridge

**\$70**

18 holes w/cart

(509) 335-4342 PALOUSERIDGE.COM

Not valid for group outing play. Present this Summer Series ad to redeem promo. Expires 8-1-25