

# PALOUSE

## SUMMER SERIES

Pullman | Moscow | Colfax | Lewiston



**July 25-27, 2025**  
**10U & 11U**



*Welcome*  
**Baseball Families!**



# ***PALOUSE SUMMER SERIES***

***July 25-27***

***10U***

## **TEAM LIST**

Washington Rush  
Moscow Blue Devils  
Palouse Cougars  
Brewster Farmers

Moscow Pilgrims  
Liberty Lake Lightning  
Orofino Maniacs

## **FRIDAY, JULY 25**

### **MOSCOW SD 3**

### **MOSCOW SD 4**

**1:00 PM** Palouse Cougars vs  
Moscow Pilgrims

**2:30 PM** Moscow Blue Devils vs  
Brewster Farmers

**3:30 PM** Liberty Lake Lightning vs  
Moscow Pilgrims

**5:00 PM** Washington Rush vs  
Orofino Maniacs

**6:00 PM** Palouse Cougars vs  
Liberty Lake Lightning

## **SATURDAY, JULY 26**

### **MOSCOW SD 3**

### **MOSCOW SD 4**

**10:15 AM** Moscow Blue Devils vs  
Orofino Maniacs

**9:30 AM** Moscow Pilgrims vs  
Washington Rush

**12:45 PM** Orofino Maniacs vs  
Liberty Lake Lightning

**12:00 PM** Moscow Pilgrims vs  
Brewster Farmers

**2:30 PM** Washington Rush vs  
Moscow Blue Devils

**5:00 PM** Brewster Farmers vs  
Palouse Cougars

## **SUNDAY, JULY 27**

### **MOSCOW SD 3**

### **MOSCOW SD 4**

**10:30 AM** #2 Seed vs  
#3 Seed

**9:30 AM** **Consolation Game**  
#5 Seed vs  
#6 Seed

**1:00 PM** #1 Seed vs  
#4 Seed

**3:30 PM** **Championship Game**

***AT***  
***MOSCOW SD PLAYFIELDS***



Open 7 Days A Week  
Open 11am - 2am Daily  
**All Ages Welcome Until 8pm**  
Grill Closes At 8pm  
Outdoor Seating

"A Tradition Since 1932"

@thecoug

Sunday - Trivia @ 6pm  
Tuesday - Hamburger Special  
Wednesday - Mug Night  
Awesome Hourly Daily  
Open Every CFS



# ***PALOUSE SUMMER SERIES***

***July 25-27***

***11U***

## **TEAM LIST**

Moscow Blue Devils  
Palouse Cougars  
Liberty Lake Lightning

Washington Rush  
Spokane Dirtbags  
Spokane Americans

## **FRIDAY, JULY 25**

### **MOSCOW SD 1**

**12:30 PM** Moscow Blue Devils vs  
Liberty Lake Lightning

**3:00 PM** Moscow Blue Devils vs  
Spokane Americans

**5:30 PM** Spokane Americans vs  
Washington Rush

## **SATURDAY, JULY 26**

### **MOSCOW SD 1**

### **MOSCOW SD 3**

**10:00 AM** Palouse Cougars vs  
Spokane Dirtbags

**12:30 PM** Liberty Lake Lightning vs  
Washington Rush

**3:00 PM** Spokane Dirtbags vs  
Moscow Blue Devils

**5:30 PM** Washington Rush vs  
Spokane Dirtbags

**3:30 PM** Spokane Americans vs  
Palouse Cougars

**6:00 PM** Palouse Cougars vs  
Liberty Lake Lightning

## **SUNDAY, JULY 27**

### **MOSCOW SD 1**

### **MOSCOW SD 4**

**10:00 AM** #2 Seed vs  
#3 Seed

**12:00 PM** **Consolation Game**  
#5 Seed vs  
#6 Seed

**12:30 PM** #1 Seed vs  
#4 Seed

**3:00 PM** **Championship Game**

***AT***  
***MOSCOW SD PLAYFIELDS***

# THE LAND

**Open All Summer - 7 Days A Week**

**All Ages Welcome Until 9pm Daily** | Outdoor Patio - Air Conditioning

Food, Drinks, Billiards, Darts, & More

Dine-in or Carryout Options



**3 Minutes** North of  
Bailey-Brayton Field.  
Order From The Field & Pick up  
Post Game!

Call Ahead For Groups  
(509) 715-1003

# ***PALOUSE SUMMER SERIES***

***July 25-27***

***10U & 11U Wood Bat***

## **11U Teams**

Washington Rush  
Palouse Cougars  
Spokane Americans  
Spokane Dirtbags  
Liberty Lake Lightning  
Moscow Blue Devils

## **10U Teams**

Washington Rush  
Palouse Cougars  
Moscow Pilgrims  
Brewster Farmers  
Orofino Maniacs  
Liberty Lake Lightning  
Moscow Blue Devils

### **FRIDAY, JULY 25**

#### **MOSCOW SD 1**

**12:30 PM** Moscow Blue Devils vs  
Liberty Lake Lightning

#### **MOSCOW SD 3**

**1:00 PM** Palouse Cougars vs  
Moscow Pilgrims

#### **MOSCOW SD 4**

**3:00 PM** Moscow Blue Devils vs  
Spokane Americans

**3:30 PM** Liberty Lake Lightning vs  
Moscow Pilgrims

**2:30 PM** Moscow Blue Devils vs  
Brewster Farmers

**5:30 PM** Spokane Americans vs  
Washington Rush

**6:00 PM** Palouse Cougars vs  
Liberty Lake Lightning

**5:00 PM** Washington Rush vs  
Orofino Maniacs

### **SATURDAY, JULY 26**

#### **MOSCOW SD 1**

**10:00 AM** Palouse Cougars vs  
Spokane Dirtbags

#### **MOSCOW SD 3**

**10:15 AM** Moscow Blue Devils vs  
Orofino Maniacs

#### **MOSCOW SD 4**

**9:30 AM** Moscow Pilgrims vs  
Washington Rush

**12:30 PM** Liberty Lake Lightning vs  
Washington Rush

**12:45 PM** Orofino Maniacs vs  
Liberty Lake Lightning

**12:00 PM** Moscow Pilgrims vs  
Brewster Farmers

**3:00 PM** Spokane Dirtbags vs  
Moscow Blue Devils

**3:30 PM** Spokane Americans vs  
Palouse Cougars

**2:30 PM** Washington Rush vs  
Moscow Blue Devils

**5:30 PM** Washington Rush vs  
Spokane Dirtbags

**6:00 PM** Palouse Cougars vs  
Liberty Lake Lightning

**5:00 PM** Brewster Farmers vs  
Palouse Cougars

### **SUNDAY, JULY 27**

#### **MOSCOW SD 1**

**10:00 AM** #2 Seed vs  
#3 Seed

#### **MOSCOW SD 3**

**10:30 AM** #2 Seed vs  
#3 Seed

#### **MOSCOW SD 4**

#### **10U Consolation Game**

**9:30 AM** #5 Seed vs  
#6 Seed

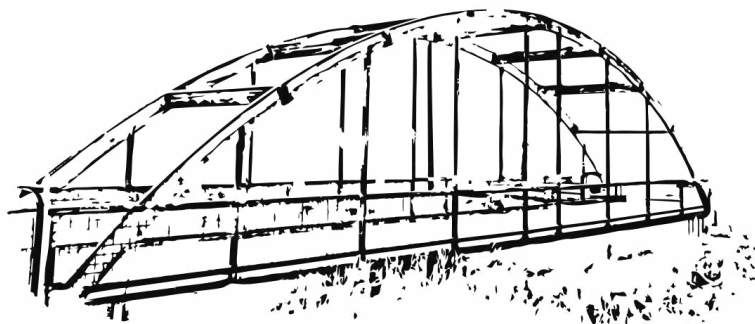
**12:30 PM** #1 Seed vs  
#4 Seed

**1:00 PM** #1 Seed vs  
#4 Seed

**11U Consolation Game**  
**12:00 PM** #5 Seed vs  
#6 Seed

**3:00 PM** 11U Championship Game

**3:30 PM** 10U Championship Game



# WOODBIDGE

## Real Estate

**605 S. Grand Ave, Suite 1**

**Pullman, WA 99163**

**Pullman/Moscow/Colfax/**

**Lewiston/Coeur d'Alene**

**& beyond!**



# JACOB T. DAVIS

BROKER/OWNER

**509-553-9068**

**[jacobtdavis@woodbridgereale.com](mailto:jacobtdavis@woodbridgereale.com)**

**[woodbridgereale.com](http://woodbridgereale.com)**



## ***Wood Bat Tournament Rules & Regulations***

### **10U and 11U Divisions**

#### **AGE DETERMINATION**

1. Age divisions will be determined by child's age on May 1<sup>st</sup>, 2025.
2. Players must be born on or after May 1<sup>st</sup>:
  - a. 2013 for 11U
  - b. 2014 for 10U

#### **EQUIPMENT NOTES:**

1. No metal cleats allowed in any division
2. **All bats must be fully wood or wood composite to be used. No metal bats.**
3. Penalty for the Use of an Illegal Bat:
  - a. Each team is responsible for ensuring they are using legal bats – umpires will not check all team's bats prior to the game
  - b. In the case where the batter is discovered to have used an illegal bat (or step in the batter's box with an illegal bat) prior to the next pitch being thrown, the batter is declared OUT and all base runners will be returned to their original bases from the start of the previous pitch.
  - c. The second offense of an illegal bat in the same game (by ANY player) will result in the same penalty above, as well as a coach & player ejection

#### **GENERAL PRE-GAME & GAME PROCEDURES**

1. Home team, in pool play, will be the first team listed on the bracket. During bracket play, the home team will be determined by the higher ranked seed. Tie breakers below will be used to determine the home teams.
2. We will attempt to stay on schedule as much as possible. Teams should do their best to be warmed up and prepared to play at their scheduled game times, regardless of when the game being played in front of them ends. Player health and safety will be first and foremost, but please show a sense of urgency when getting players & pitchers warmed up for your games if the prior game runs longer than expected.
3. Games may start early if both coaches and the umpires agree to it.
4. No infield will be taken before games.
5. Scorekeeping: Home team will be responsible for keeping official scorebook during game.
6. Protests will not be allowed on judgment calls. The umpire will settle all problems on the



**STOP BY AND GET YOUR CAR  
CLEAN AND SHINY!**

**PULLMAN  
440 Brelsford Dr,**

**MOSCOW  
150 Southview Ave**

**GO WITH THE BEST, RPM EXPRESS**



field at the time of dispute. Umpire may confer with Tournament Director and Umpire-in-Chief for help at time of dispute. No protest will be allowed after next pitch is thrown or following the game.

### **TIME LIMITS & RUN RULES**






1. Game length will be 6 innings OR no new inning at 1 hour and 45 minutes. Umpire will start game time when first pitch is ready to be thrown.
2. Time limits apply to all pool play and bracket games with the exception of the championship game.
3. Tie Games: For all pool play and/or consolation games, if a game is tied after regulation but time remains, the game will continue until either (A) a winner has been determined or (B) the time limit has been reached.
  - a. All extra innings will be played by placing the previous batter in the lineup on second base with no outs, following the Major League Baseball rule
  - b. If after an extra inning is played and the time has elapsed, the game will be declared a tie
  - c. All ties will be considered a 1/2 (.5) win and a 1/2 (.5) loss in the pool standings
  - d. For all bracket play games where a winner must be determined, all extra innings will be played by placing the previous batter in the lineup on second base with no outs, following the Major League Baseball rule
4. Mercy Rule – 15 runs after 3 innings, 10 runs after 4 innings, and 8 runs after 5 innings.
5. 3 innings constitutes a complete game when delayed or called because of inclement weather.

### **RULES OF PLAY**

1. 11U will be played on 70' bases with a 50' pitching distance. Lead off, stealing, and dropped 3rd strike is allowed. Balks will be enforced.
2. 10U will be played on 60' bases with a 46' pitching distance. Stealing allowed after the ball crosses the plate. No dropped 3<sup>rd</sup> strike and no balks will be enforced.
  - a. When a runner is deemed to leave the base prior to the ball crossing the plate:
    - i. If the ball is not put in play, the runner that left early must return to the base he came from.
    - ii. If the ball is put in play, upon completion of the play, the runner that left early must be returned to the last unoccupied base – he can only advance to the base that the hitter forces him to. If the runner that left early is called out, the out will stand as called.
3. In-Game Rules:
  - a. Intentional Walks – teams simply need to request to the umpire to issue an intentional walk.
  - b. Sliding – the high school force play/slide rule is in effect. Players must go straight into the bag on force play sides; no malicious contact. It is the discretion of the



## PULLMAN'S FAVORITE POST-GAME TRADITION.

-  24 rotating taps
-  Family-friendly with toy boxes + coloring menus
-  Scratch-made meals
-  Cougar Gold Mac & Cheese, Pullman Pretzels, Prime Rib Dip
-  Large group seating

**SOUTH FORK  
PUBLIC HOUSE**

*Sun - Thu 11:00AM - 9:00PM*

*Fri - Sat 11:00AM - 9:30PM*

1680 S Grand Ave Pullman, WA 99163

(509) 332-3675

umpire if the runner is trying to avoid contact or a collision. Malicious contact-runner will be ejected.

- c. Possession – defensive players must have possession of the ball to block a base or home plate.
- d. Head first slides – allowed in ALL divisions.

4. Lineup Rules:

- a. The batting lineup must consist of a minimum of 9 players; there is no maximum
    - i. (EX) If a team's roster consists of 13 players, they can choose to bat 9, 10, 11, 12 or 13 batters
    - ii. NOTE: Teams can start a game with as few as 8 players; in that case, the 9th spot in the order is an automatic out. Teams with fewer than 8 players must take a forfeit – the game can still be played
    - iii. If players are removed from the lineup for whatever reason (injury, etc.), the spot of the player removed from the lineup will result in an automatic out
  - b. High school substitution rules apply – starters are eligible to re-enter the game one time in their original spot in the batting order
  - c. Regardless of lineup construction, teams are allowed free defensive substitutions throughout the game. A player may enter the game defensively at any time without entering the batting lineup
    - i. The only time a player should report as an eligible substitute is when replacing another player in the batting order. This is NOT a requirement per Official Baseball Rules; it just serves as a courtesy to the umpires and the opposing team
  - d. Based on the fact that there are free defensive substitutions, there is no need for a designated hitter, as anyone can be in the field at any given time
  - e. For the purposes of tracking pitching, all pitching changes MUST be reported to both the game officials and opposing team. Pitchers are eligible as free defensive substitutes
5. No slug bunting is allowed. Any player who does will be ejected from the game.
6. Courtesy runners – allowed for the current pitcher and catcher WITH 2 OUTS only
- a. If you are not batting your entire team, the courtesy runner can be anyone NOT CURRENTLY in the batting order – they do not have to be an eligible substitute. The same player cannot run for both the pitcher and the catcher in the same inning
  - b. If you are batting your entire team, the courtesy runner MUST BE the last batted out
7. On-deck hitters must remain on their own dugout side of field in designated on-deck area.



# APEX ROOFING

## Apex Roofing: Premium Quality Roofing, Every Time

Treating Every Home As If It Were Our Own

- We Stand Behind Our Work
- Storm Damage Restoration Experts
- Custom Solutions for Every Customer

[BOOK A FREE ESTIMATE](#)



317 W 6th St #107, Moscow, ID 83843  
(509) 316-2669

## **PITCHING RULES & REGULATIONS**

1. Once a pitcher is removed from the mound, he is ineligible to return to that game as a pitcher, even if he remained in the game at another defensive position.
2. Mound Visits – 1 coach visit per inning to the same pitcher; 2nd coach visit in an inning to the same pitcher must result in a change. No limit per game.
3. 11U Balks – big book; balks are live balls until the conclusion of the pitch/play. No warnings on balks regardless of age group
  - a. Third to First Move – this move is ILLEGAL; penalty is a balk
4. GameChanger will be the system of record for all pitch count protests. The site / tournament director will review GameChanger records to determine whether a pitch count violation has occurred
  - a. If the team being questioned does NOT use GameChanger, the site / tournament director will use their opponent's GameChanger data to determine whether a violation has occurred. If neither team has a GameChanger account, the pitch count protest will not be upheld
  - b. If there is a discrepancy between pitch counts in GameChanger between teams, the GameChanger for the team that the player in question is on will be used as the official pitch count
5. Each team is STRONGLY ENCOURAGED to keep the welfare of their players at the forefront of all pitching decisions.
6. We have imposed the following pitch count rules for all youth PSS Events:
  - a. NOTE: A day of rest is measured by a calendar day, not a 24-hour period. Regardless of the time of the game, a pitcher that needs 1-day rest or more based on the pitch counts below needs a full calendar day off (or two); not 24 hours of rest)
  - b. Maximum of 85 pitches in a single day
  - c. Maximum of 105 pitches over a 2-day period
  - d. Maximum of 125 pitches over a 3-day period
  - e. 40 pitches or less requires NO day off; 41+ requires one day off
  - f. 41 to 60 pitches – 1 day rest
  - g. 61-85 pitches – 2 days of rest
7. Please have a player/coach available to warm up your pitcher between innings when your catcher is not ready. A player should have protective facemask on at all times.

## **GENERAL EXPECTATIONS**

1. All players must wear uniform on outside of their undershirts or sweatshirts so official scorekeeper can easily identify player.
2. Coaches / Team Personnel – We ask that each team has no more than four (4) coaches / team personnel in the dugout for games.
3. Eliminate defensive huddles prior to your team taking the field between innings.
4. At the end of the game, remove garbage from dugout and clear dugout in a timely manner. Hold post-game discussions outside the dugout and preferably off of the playing field.

# TICK KLOCK DRUG

📞 (509) 397-2111



**Offering pharmacy and gift shop services, clothing, and accessories to the following areas:**

- 📍 Colfax, WA
- 📍 Pullman, WA
- 📍 Clarkston, WA
- 📍 LaCrosse, WA

- 📍 Endicott, WA
- 📍 Oakesdale, WA
- 📍 Garfield, WA
- 📍 Steptoe, WA

- 📍 Rosalia, WA
- 📍 Palouse, WA
- 📍 Moscow, ID
- 📍 Lewiston, ID

Monday: 9:00 AM - 5:30 PM  
Tuesday: 9:00 AM - 5:30 PM  
Wednesday: 9:00 AM - 5:30 PM

109 S Main St  
Colfax, WA 99111

Thursday: 9:00 AM - 5:30 PM  
Friday: 9:00 AM - 5:30 PM  
Saturday: 9:00 AM - 4:00 PM  
Sunday: Closed

5. Show respect to the umpires, the fans, your players, your opponents and most of all to this great game.
6. Players / Coach Ejections:
  - a. Any player or coach ejection will result in a one-game suspension, to be served in the next tournament game
    - i. For all player ejections, the player should remain in the dugout
    - ii. For all coach ejections, the coach must leave the complex immediately and be out of sight from game officials. Failure to comply with this directive will result in forfeiture of the game.
    - iii. If the same player or coach is ejected for a 2nd time (either in the current tournament or any future PSS event), he or she will be suspended for the remainder of the tournament.
7. Fan / Parent Ejections:
  - a. Any fan or parent ejections will result in removal from the complex. The fan or parent in question will not be permitted back into the complex for the remainder of the tournament.
  - b. A second fan or parent ejection for the same team will result in the removal of ALL FANS for that given team. This fan restriction will remain in place for that team for the remainder of the current event.
8. Alcohol Policy
  - a. Alcohol will not be permitted within the complex at any PSS event. This offense will result in immediate removal from the complex, and the above fan ejection policies will apply.
  - b. PSS is committed to providing a positive and safe experience for all participants at our events. Alcohol has no place at a youth sporting event, and we will have zero tolerance if anyone is found to be consuming alcohol at any complex being used for a tournament. Failure to comply with these guidelines and/or comply with on-site tournament staff will result in the immediate removal from the complex, along with the consequences listed in the fan ejection policy above. Thank you in advance for your help with this policy.

## **POOL SEEDING & TIEBREAKERS**

1. Divisions (and pools within divisions) will be seeded from top to bottom based on pool play record (win percentage). If ties exist, the following tiebreaker criteria will be used:
  - a. Head-to-Head, if applicable
  - b. Runs Allowed
  - c. Runs Scored
  - d. Run Differential
  - e. Coin Flip
2. In the case of a 3-way tie where head to head cannot break the tie, the remaining tie breakers will be used to break the 3 way tie and seed teams. We will never revert back to a previous tie breaker once a tie has been broken.



# MOSCOW

chamber of commerce  
+ visitor center



Explore  
THE  
Possibilities

## VISIT DOWNTOWN MOSCOW

Our vibrant downtown offers an exciting,  
eclectic retail experience + world class dining

411 S. Main St-moscowchamber.com-(208)882-1800



### FLYING SQUIRREL

THE WORLD'S LARGEST INDOOR TRAMPOLINE FUN PARKS



FREE STYLE TRAMPOLINE  
COURT



BIRTHDAY PARTIES

60, 90, 120 MINUTE JUMP TIME, NEON  
LIGHTS, AND 60, 90, 120 MINUTE  
TODDLER TIMES

**20% OFF**

DISCOUNT CODE:  
**Summer25**



TRAPEZE & FORM PIT



BATTLE BEAM



NINJA COURSE



## FLYINGSQUIRRELSports.COM

231 Warbonnet Dr, Moscow, ID 83843

Disclaimer: Sale is valid until August 31, 2025. Eligible Offer Items: The sale applies to the following items: 60, 90, 120 Jump Times, Neon Times, and 60, 90, 120 Toddler Jump Times. Online Purchase Requirement: To avail of this offer, all purchases must be made exclusively online through our official website. Restrictions: Please note that this offer cannot be combined with any other coupons, discounts, or promotions. Not valid on Gift Cards or Birthday Party Packages. Only one offer can be applied to each transaction. By participating in this sale, you acknowledge and accept these terms and conditions. We reserve the right to modify or terminate this offer at any time without prior notice. For any inquiries or concerns, please contact our customer support team. Jump passes expire 365 after purchase date. Must Present Coupon to redeem.

3. Pool protection – we reserve the right to change matchups in the first round of bracket play to avoid pool play rematches and/or inter-program matchups. The goal here is to create unique matchups within the same event as much as possible. If pool or program protection results in a “like” matchup that has already happened in pool play, we will not “pool protect”.

# CRIMSON

Bar + Bites

OPEN DAILY  
4PM

EVERYONE WELCOME!

509.334.4437

1190 SE BISHOP BLVD  
PULLMAN, WA



# KNEAD

Café & Pâtisserie



BEST COFFEE SHOP



parent  
Fueling <sup>^</sup> champions all  
Summer long!

# **PALOUSE**

## **SUMMER SERIES**

### **TOURNAMENT EXTRAS**

- **Weather or other extenuating circumstances, such as smoke, that occur during tournament play that limit the number of games played will determine the following refund:**
  - **1 game played = 50% refund**
  - **2 games or more played = no refund**
- **Cages can be utilized at Colfax's McDonald Park, but not at WSU. Each team will have access to a cage on their respective sides. If our local youth teams are using the softball cages, the main cage schedule will go as follows; home team 1:15 mins prior to the games start time and the away team :45 mins prior to the games start time. The same cage schedule will be used for any games played at Pullman High Schools, Quann Field. LCSC may have available indoor cages out passed the right field wall and the schedule for that is TBD. Wiffle balls will be needed at Clearwater Fields as they do not have cages. Moscow SDC Playfields has two cages, one on each side of the main field. Teams can access those on their respective sides.**
- **We will follow all health guidelines in place by the state of Washington, Whitman County and Washington State University as well as the state of Idaho, Nez Perce County and Lewis and Clark State College.**
- **NO METAL SPIKES ALLOWED AT WSU or WSU's Valley Road Playfields. This goes for any part of the facility. Metal spikes can be worn at LCSC and Colfax, but not WSU.**
- **There are no seeds allowed at WSU's Bailey Brayton, WSU Valley Playfields or LCSC's Harris Field. NO EXCEPTIONS.**
- **Each team will provided a box of baseballs upon arriving at the tournament. Any additional new baseballs will be provided by the team if you run out of the courtesy box of balls from the PSS.**
- **There are no gate fees for the 2025 Palouse Summer Series. All guidelines for fans attending the game will be determined by each fields governing body and will strictly follow our states guidelines at the minimum.**
- **Alcohol and tobacco products are not allowed at any of the PSS sites and Dogs are not allowed at WSU's Bailey-Brayton Field**
- **Upon arrival each tournament may have game awards, prizes, homerun coupons, etc. The gates and site supervisors will handle distribution of those prizes, but make sure coaches and parents are also communicating as a reminder. We want to make sure those coupons are handed out.**





American Fare  
with Southern Flair

Craft Beer  
Crafted Cocktails  
Much Whiskey



Group & Family Friendly

Friendly to parents  
who need a break! 😊



Monday to Saturday  
Lunch 11:30am to 3pm

Dinner 3pm to 8pm  
(8pm Last Seating)

Happy Hour  
3pm to 5pm (Restaurant)  
3pm to 6pm (Bar & Patio)



1360 SE Bishop Blvd.  
Pullman, WA 99163

(509) 332.0108  
Call for Reservations



# CHIPMAN & TAYLOR

**EXPERIENCE THE DIFFERENCE**

SE 250 BISHOP BLVD PULLMAN WA 99163-4914



Chipman & Taylor Chevrolet in PULLMAN, WA, serves all Eastern Washington shoppers including those from Spokane and the Tri-Cities. We have the highest rated customer service in the area, so before you settle on other auto dealers around Spokane view our new or used inventory to make sure you're getting the vehicle you truly want and also at the best price available. Be sure to check the special offers at our Chevrolet dealership before you drive in! Contact us at (509) 592-4152 if you have any questions about any of the new and used vehicles we have. Our experienced and well-trained staff is here to answer all your questions.

# **PALOUSE**

## **SUMMER SERIES**

### **INCLEMENT WEATHER OUTLINE**

- **The tournament director will make the ultimate decision to delay, reschedule, or cancel any tournament games, but not without consultation from any or all of the following: coaches from both teams, umpires, and site management personnel. Please keep in mind that it is in the best interest of all involved that the maximum number of tournament games is completed.**
- **In the event of inclement weather on any one of the tournament days, the schedule may be altered so that maximum games are played for each team as evenly as possible, with respect to the entire tournament field.**
- **In the event that inclement weather does cancel games before championship Sunday, the team(s) with the best record out of the round robin division play will be placed in the championship bracket. In the event that more than one team has the same record in round robin division play, the team(s) with the largest run differential will be placed in the championship bracket.**
- **The goal of the tournament is to ensure that the maximum number of tournament games are completed evenly by all teams and a champion is crowned on championship Sunday. The tournament director's decisions will reflect this premise.**



**WHERE THE PALOUSE COMES TO PLAY AND EAT**

**780 SE Bishop Blvd, Pullman, WA 99163**



**PULLMAN'S HOME FOR FOOD, FAMILY, & FUN.**

**FOOD HALL**

**MON 4PM-9PM**

**TUE, FRI, SAT 11AM-9PM**

**NIGHTLIFE & FOOD**

**18+**

**TUE, FRI, SAT 9PM-2AM**

**305 N GRAND AVE, PULLMAN WA**

Moscow Pilgrims					
Number	Name	Position(s)	High School	Grad Year	Hometown
17	Nils Appel	1B, 3B			Moscow, ID
33	Axum Barendregt	LCF			Moscow, ID
12	Wes Brockwalder	2B, SS			Moscow, ID
10	Marcus Cohen	RF			Moscow, ID
1	Logan Keen	SS			Moscow, ID
11	Sawyer Marines	1B, C			Moscow, ID
7	A.C. Schultz	1B, C			Moscow, ID
22	Abe Snell	LF			Moscow, ID
8	Gil Sumpter	RCF			Moscow, ID
2	Hugo Turner	3B, 2B			Moscow, ID
	<b>Head Coach</b>	David Schultz			
	<b>Asst Coach</b>	Kalen Brockwalder			
	<b>Asst Coach</b>	Andy Sumpter			
	<b>Team Manager</b>	Rachel Schultz			

Moscow Blue Devils 10U					
Number	Name	Position(s)	High School	Grad Year	Hometown
1	Cace Spooner				Moscow
2	Blaze Schott				Moscow
5	Burkely Helbling				Moscow
6	Declan Rigler				Moscow
14	Emerson Hoskins				Moscow
18	Tyson Rand				Moscow
19	Greyson Katus				Moscow
21	Caden Bieker				Moscow
24	Cooper Glider				Moscow
27	Jase Baker				Moscow
28	Julie Harner				Moscow
62	Torin Schott				Moscow
68	Logan Gleason				Moscow
84	Arlan Newhold				Moscow
	<b>Head Coach</b>	Jim Spooner			
	<b>Assistant Coach</b>	Justin Parkins			
	<b>Assistant Coach</b>	Johnny Bieker			
	<b>Team Manager</b>	Amber Jaramillo			



# PORCH LIGHT PIZZA

is a proud sponsor of Palouse Summer Series

Porch Light Pizza is the newest pizza restaurant in Pullman and offers a variety of fast, fired, artisan pizza

Check out a menu at the front gate  
or call 509-334-7437

The fire is lit and the lights is on!  
Located at 200 NE Kamiak, Pullman WA



VISIT OUR DOWNTOWN RESTAURANT  
OR TRAILSIDE TAPROOM!

RESTAURANT:  
509-338-9463  
245 SE Paradise St.  
Pullman, WA 99163

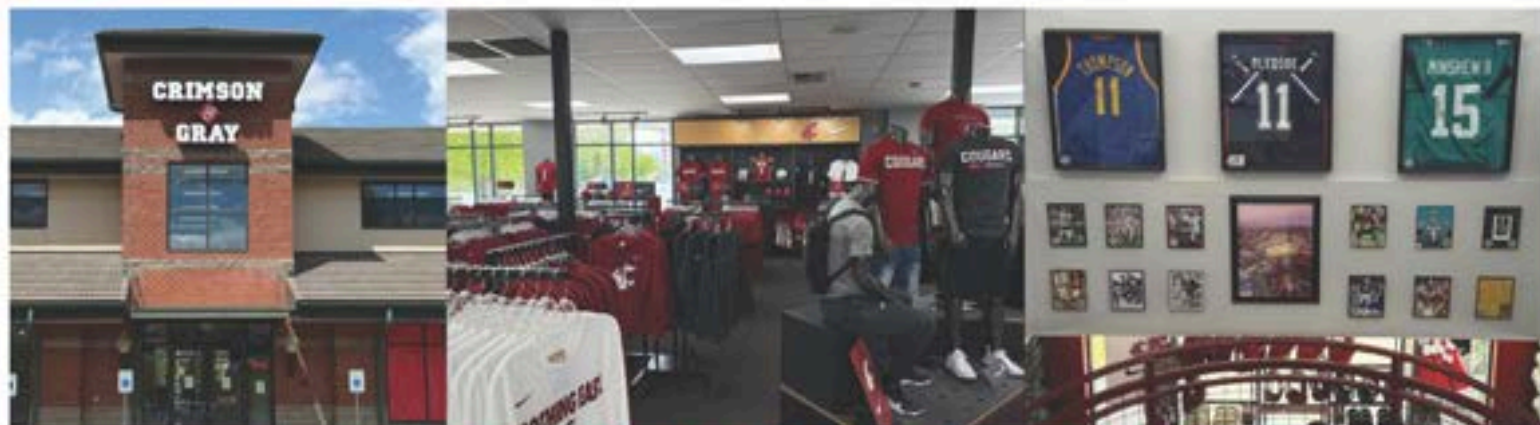
TAPROOM:  
509-339-6894  
505 SE Riverview St.  
Pullman, WA 99163

Moscow Blue Devils 11U					
Number	Name	Position(s)	High School	Grad Year	Hometown
	Ben Erhardt				Moscow, ID
	Beau McCall				Troy, ID
	Beckham Davis				Moscow, ID
	Elijah Keen				Garfield
	Eric Perry				Viola, ID
	Nash Nelson				Troy, ID
	J.D. Baker				Moscow, ID
	Luke Uhlenkott				Genesee, ID
	Malachi Paradis				Viola, ID
	Titus Love				Genesee, ID
	Truman Terhaar				Moscow, ID
	Reid Guier				Deary, ID
	Ben Erhardt				Moscow, ID
	Beau McCall				Troy, ID
	<b>Head Coach</b>	Rusty Baker			
	<b>Assistant Coach</b>	John Erhardt			
	<b>Assistant Coach</b>	Josh Terhaar			
	<b>Team Manager</b>	Amber Jaramillo			

Palouse Cougars 11U				
Number	Name	Position(s)	High School	Hometown
44	Colt Druffel	1B/OF/P	Pullman High School	Pullman, WA
22	Benjamin Corbin	C/Inf/P	Pullman High School	Pullman, WA
9	Will Parrish	OF/3B/P	Colfax High School	Pullman, WA
5	Hank Parrish	C/OF/P	Colfax High School	Colfax, WA
12	Jackson Good	1B/OF/P	Pullman High School	Pullman, WA
11	Andrew Neppel	2B/OF/P	Pullman High School	Pullman, WA
23	Theo Yen	SS/P	Pullman High School	Pullman, WA
13	Connor Hayes	C/3B/P	Moscow High School	Moscow, ID
27	Easton Sprouse	C/OF/P	Pullman High School	Pullman, WA
24	Emmett Harris	OF/P	Pullman High School	Pullman, WA
2	Cameron Adkins	Inf/P	Pullman High School	Pullman, WA
3	Colin Schultheis	CF/1B/P	Colton High School	Colton, WA
	<b>Head Coach</b>	Dusty Druffel		
	<b>Assistant Coach</b>	Dean Neppel		
	<b>Assistant Coach</b>	Jon Parrish		
	<b>Assistant Coach</b>	Geoff Parrish		

# CRIMSON & GRAY

COUG GEAR, GIFTS AND APPAREL



**[www.CRIMSONGRAY.com](http://www.CRIMSONGRAY.com)**

**1096 SE BISHOP, PULLMAN - 509-332-1440**

*College Hill*

Branded Merchandise Experts

We're not your average merchandise studio -

**WE'RE A BRANDED  
MERCHANDISE  
POWERHOUSE!**

Our team is passionate about creating custom apparel and products for businesses and organizations across the nation.

**Let's collaborate to create something  
amazing today!**



**COLLEGEHILL.COM (888) 885-1993**

Liberty Lake Lightning					
Number	Name	Position(s)	High School	Grad	Hometown
15	Boekel, Neil	RF, 2B, C			Spokane Valley, WA
44	Cook, Beckett	C, 2B, LF			Spokane Valley, WA
62	Howe, Brayden	LF, C, 3B			Spokane Valley, WA
10	Johnson, Nolan	CF, 3B, P			Liberty Lake, WA
55	Kimbrel, Grayson	SS, CF, P			Spokane Valley, WA
22	McGrotha, Trey	3B, C, P			Spokane Valley, WA
37	McManus, Kellen	1B, RF			Liberty Lake, WA
11	Oien, Nolan	CF, 1B, P			Spokane Valley, WA
16	Platt, Isaac	CF, 2B, SS, P			Spokane Valley, WA
88	Raab, Blake	3B, LF, C, P			Spokane Valley, WA
50	Terracciano, Cason	SS, P, OF			Coeur d'Alene, ID
33	Thorn, Brody	CF, 2B, C			Liberty Lake, WA
5	Yamada, Keegan	OF, 2B, C			Spokane, WA
	<b>Head Coach</b>	Kyle McManus			
	<b>Assistant Coach</b>	Garrett Kimbrel			
	<b>Assistant Coach</b>	TJ McGrotha			
	<b>Assistant Coach</b>	Steve Raab			
	<b>Team Manager</b>	Kyle McManus			

Palouse Cougars 10U					
Number	Name	Position(s)	High School	Grad Year	Hometown
30	Connor Kimble				Pullman
13	AJ Gayles				Pullman
11	Andrew Gravel				Pullman
7	Brody Keller				Colton
26	Eli Bishop				Moscow
15	Jimmy Austell				Deary
8	Kasen Corbin				Pullman
80	Douglas Schoenfelder				Colton
17	Lincoln Hawley				Moscow
34/22	Warren Ross				Colfax
21	Wiley Boone				Pullman
	<b>Head Coach</b>	Gerik Kimble			
	<b>Assistant Coach</b>	Shane Corbin			
	<b>Assistant Coach</b>	Brady Boone			
	<b>Team Manager/Contact</b>	Gerik Kimble			



Contact Jon Parrish for your insurance needs!

[jonp@pacinsurancegroup.com](mailto:jonp@pacinsurancegroup.com)

509-432-3841

Experience the charm  
of  
Downtown Colfax



Stroll past gorgeous old buildings,  
enjoy flowers blooming on every  
corner, fun for the whole family.

**We'll see you downtown!**

**SUBWAY**

**IN STORE TOURNAMENT SPECIAL!**

For every 10 athletes served,  
receive a free meal for  
yourself or a team driver!

460 E Main St, 811 N Main St,  
Pullman WA Colfax WA

(509) 332-5906

play  
palouse  
ridge

**\$70**

18 holes w/cart

(509) 335-4342 [PALOUSERIDGE.COM](http://PALOUSERIDGE.COM)

Not valid for group outing play. Present this Summer Series ad to redeem promo. Expires 8-1-25

Washington Rush 10U					
Number	Name	Position(s)	High School	Grad Year	Hometown
2	Enzo DeSapio	IF, OF			
4	Caleb Roberts	P, IF, OF, C			
6	Henry Mohammed	P, IF, OF, C			
7	Lukas Benton	P, IF, OF			
13	Jack Hasselbeck	P, IF, OF			
15	Charlie Hasselbeck	P, IF, OF			
17	Jayden Chong	P, IF, OF			
22	Ronan Vrablik	IF, OF, C			
23	Roman Gross	IF, OF, P			
44	Cameron Woods	IF, OF, P			
99	Beau Hinkle	P, C, IF, OC			
	<b>Head Coach</b>	Mike Hinkle			
	<b>Assistant Coach</b>	Mark Gross			
	<b>Assistant Coach</b>	Daren Mohammed			
	<b>Team Manager</b>	Lizzie Mohammed			

Brewster Farmers 10U					
Number	Name	Position(s)	High School	Grad Year	Hometown
1	Carter Helm	OF/INF/P	Chelan		Chelan
3	Jace Vallance	OF	Pateros		Pateros
5	Gregor Sullivan	C/INF/OF	Brewster		Brewster
7	Jackson Gebbers	INF/P	Brewster		Brewster
8	Scoutson Todd	INF/P	Brewster		Brewster
9	Edgar Hernandez	OF/INF/P	Brewster		Brewster
11	Edward Aldridge	OF/INF	Brewster		Brewster
12	Carson Becker	INF/P/C	Brewster		Brewster
14	Dierks Todd	INF/P	Brewster		Brewster
23	Jordi Talavera	INF/P	Brewster		Brewster
24	Barrett Gebbers	INF/P	Brewster		Brewster
	<b>Head Coach</b>	Travis Todd			
	<b>Assistant Coach</b>	Justin Helm			
	<b>Team Manager</b>	Travis Todd			

# PALOUSE

## SUMMER SERIES

Pullman | Moscow | Colfax | Lewiston

# ***WE WANT YOUR FEEDBACK!***



Whether you are a player, coach, fan, or a local  
we want to hear from you!

Orofino 10U					
Number	Name	Position(s)	High School	Grad Year	Hometown
14	Kade Peterson	1,4,OF			Orofino
7	Braxen Arient	1,2,4,6,OF			Orofino
8	Holden Callahan	1,4,6, OF			Orofino
24	Colten Welch	1,5,6, OF			Orofino
9	Emmitt Stemrich	1,OF			Orofino
2	Bill Peterson	1,2,5, OF			Orofino
15	Dallas Garrison	1,5,OF			Orofino
11	Blake Stuart	OF			Orofino
34	Ezra Swindell	65			Orofino
50	Blake Adams	OF			Orofino
	<b>Head Coach</b>	Justin Arient			
	<b>Assistant Coach</b>	Mike Callahan			
	<b>Assistant Coach</b>	Oliver Peterson			
	<b>Team Manager</b>	Justin Arient			

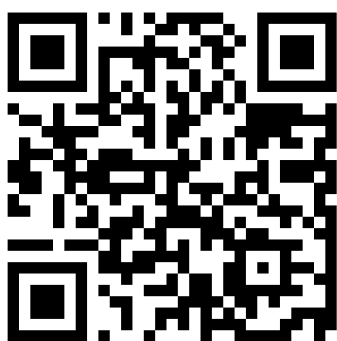
Spokane Americans					
Number	Name	Position(s)	High School	Grad Year	Hometown
0	Kase Roderick	OF	Mead		Spokane, WA
00	Dakota Dixon	P/OF	Cheney		Cheney, WA
1	Cole Smith	P/CF	Liberty		Spangle, WA
4	Kellan Cowley	2B/P	Gonzaga Prep		Spokane, WA
5	Boone Bennett	SS/P	Mead		Mead, WA
7	Elliot Kelly	OF	Liberty		Spokane, WA
10	Kasen Webber	P/1B	Reardan		Reardan, WA
11	Eli Raby	3B	Northwest Christian		Spokane, WA
31	Cameron Allan	Utility	U-Hi		Spokane Valley, WA
44	Kam Ketel	P/OF	Freeman		Valley Ford, WA
99	Weston Templeton	C/P	Liberty		Spokane, WA
	<b>Head Coach</b>		Brandon Templeton		
	<b>Assistant Coach</b>		Alek Webber		
	<b>Assistant Coach</b>		Blake Bennett		
	<b>Assistant Coach</b>		Ryan Allan		

# **PALOUSE**

## **SUMMER SERIES**

Pullman | Moscow | Colfax | Lewiston

# Find us online!



PSS Website



PSS Instagram



Purchase Tournament  
Pictures

Rush 11U					
Number	Name	Position(s)	High School	Grad Year	Hometown
24	Alexander Perry				Bothell, WA
27	Bennett Hampton				Edmonds, WA
51	Bryson Sapdia				Mukilteo, WA
23	Cooper Sullivan				Everett, WA
88	Graham Guldi				Kenmore, WA
29	Jonathon Abbott				Lynnwood, WA
10	Knoxley Cartwright				Edmonds, WA
4	Luke Reynolds				Lynnwood, WA
44	Malachi Knudsvig				Snohomish, WA
14	Peter Vezzoni				Everett, WA
30	Porter Smith				Everett, WA
33	Sebastian Lee				Everett, WA
99	Miguel Rodriguez				Lynnwood, WA
	<b>Head Coach</b>	Sunny Lee			

Spokane Dirtbags					
Number	Name	Position(s)	High School	Grad Year	Hometown
10	Raylan Beirl	P, OF, IF			Nine Mile Falls
9	Karter Mueller	P, IF			Spokane
5	Levi Kimberling	C, OF			Spokane
3	Keagan Shaw	P, IF			Spokane
17	Crosby Magnuson	C, OF, IF			Spokane
20	Cameron Fruen	P, OF, IF			Nine Mile Falls
99	Reece Morin	OF, IF			Spokane
24	Justin Mecham	P, OF, IF			Liberty Lake
2	Leon Draper	P, OF, IF			Spokane
14	Breklyn Belarde	C, OF, IF			Spokane
25	Mathayos Belarde	P, OF, IF			Spokane
	<b>Head Coach</b>	Robert Mueller			
	<b>Assistant Coach</b>	Randy Kimberling			
	<b>Assistant Coach</b>	Justin Mecham			
	<b>Team Manager</b>	Nick Beirl			

Liberty Lake Lightning 11U					
Number	Name	Position(s)	High School	Grad Year	Hometown
18	Deacon Begovich	C, CF, P			Liberty Lake, WA
3	Wilson Dobyns	C, 1B, P			Liberty Lake, WA
7	Charlie Hall	RF, 1B, P			Spokane, WA
30	Rhett Hallett	C, RF, P			Liberty Lake, WA
6	Gavin Jay	C, 1B, P			Spokane Valley, WA
14	Joey McCabe	1B, RF			Spokane, WA
1	Carter Moore	SS, 2B, P			Greenacres, WA
42	Gunner Olson	3B, LF, P			Greenacres, WA
24	Sawyer Seybold	3B, LF, P			Spokane Valley, WA
13	Cal Staley	2B, SS, P			Spokane, WA
8	Ryland Stamschror	SS, CF, P			Spokane, WA
99	Ezra Stirtz	C, LF			Spokane, WA
	<b>Head Coach</b>	Shane Moore			
	<b>Assistant Coach</b>	John Dobyns			
	<b>Assistant Coach</b>	Chris Hallett			
	<b>Assistant Coach</b>	Joe Staley			